

# TRX 1550 PLUS



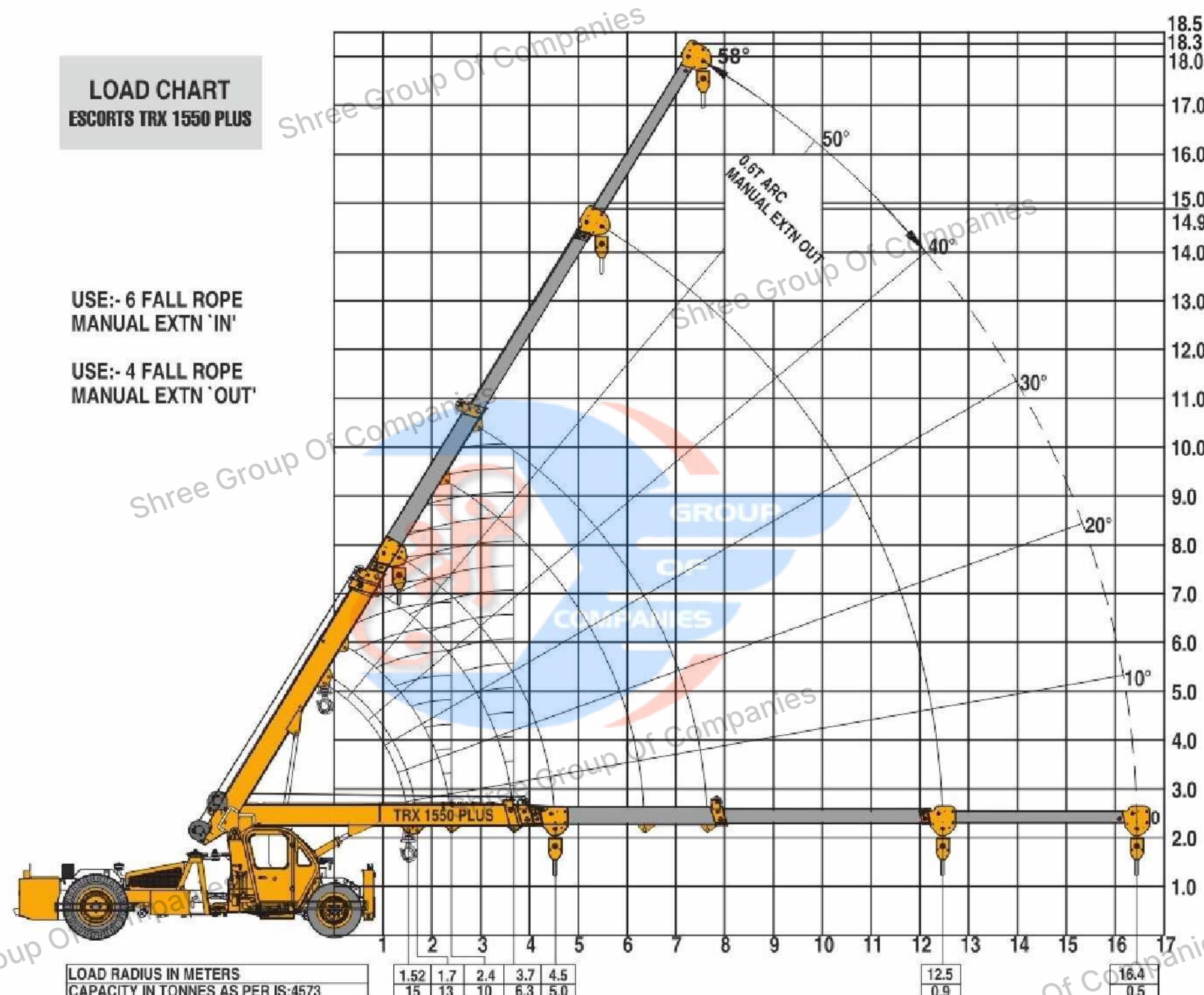
# TRX 1550 PLUS



## LOAD CHART ESCORTS TRX 1550 PLUS

USE:- 6 FALL ROPE  
MANUAL EXTN 'IN'

USE:- 4 FALL ROPE  
MANUAL EXTN 'OUT'



**Toll Free No.:**  
**1800- 180- 4488**

(Timings: 9.30 am - 6.00 pm, Monday to Friday)

e-mail: [eca.help@escorts.co.in](mailto:eca.help@escorts.co.in)

Contact : 9300723311

Escorts Construction Equipment: Plot No. 219, Sector- 58, Ballabhgarh- 121 004  
Faridabad, Haryana (INDIA) Tel.: 0129-2306574/2306598/2306571  
Fax: 0129-2306572 Website: [www.escortsgroup.com](http://www.escortsgroup.com)

Authorised Dealer

Accessories shown in the picture may not be the part of standard fitment and are subject to change without prior notice.

The information contained in this folder is intended to be of general nature only. We reserve the right to change specifications without notice.

Hub/July/2019

Capacity-15 ton

Boom height-18.3 m

500 Hrs service interval engine

Heavy duty 8 forward & 2 reverse  
transmission



Contact : 9300723311



## SPECIFICATIONS

Contact : 9300723311

### RATED CAPACITY

Capacity	15 T @ 1.52 m radius
	0.9 T @ 12.4 m radius

### ENGINE

Make & Model	Escorts AE 4.312C-3A Four Cylinder, Water Cooled Diesel Engine developing 49.5 HP @ 2200 RPM or equivalent
--------------	--

### TRANSMISSION

Drive	2 Wheel drive
Type	Heavy Duty, Constant Mesh, Helical Teeth Gearbox coupled with straight drive axle
Speeds	8 Forward & 2 Reverse speeds with High / Low Selector
Creep Speed	2 km/hr under laden condition, ideal for crane operation (with load)
Clutch	Single Plate, Heavy Duty type

### STEERING

Type	Power Steering, Articulated, hydraulically controlled, actuated by Steering Wheel"
Articulation	45° on either side

### BRAKES

Front Wheel	Fully Pneumatic brakes on front wheels
Rear Wheel	Disc brakes actuated through a slave cylinder
Parking	Pneumatic operated, foil safe type applicable on front wheels

### TYRES

Front	11.00 X 20 - 16 PR (4 nos.), inflation pressure 110 - 115 PSI
Rear	14.00 X 24 - 16 PR (2 nos.), inflation pressure 58 PSI. Water Ballasted

### TRACK

Front	1930 mm (Center of twin wheels)
Rear	1680 mm (Center of wheels)
Turning Radius	6.8 m

### BOOM

Luffing Angle	Zero to 58.5°
Telescoping	4 part, 3 part hydraulically powered & fully synchronized, 4th part power extended & manually pinned
Type	Slotted Boom with Rope compensation
Derricking	Through double acting jacks

### HOIST MECHANISM

Hoist	Hydraulic winch. Six falls (Winch capacity 12 T) Rope dia 13 mm
-------	---

### HYDRAULIC SYSTEM

Pump	Vane type hydraulic pump
Control Valve	Control valve with built in pressure relief valve for precision control
Hydraulic Filter	Suction line has a 100 mesh inline strainer while return line has 25 microns full flow filter

### ELECTRICAL SYSTEM

Type	12V Single battery, Negative earth
------	------------------------------------

### CAPACITIES

Fuel tank	90 Ltrs.
Hydraulic tank	90 Ltrs.

### OPERATING WEIGHT (KG)

Gross Vehicle	Standard M/C 13485 kg
Weight	With Outriggers 14065 kg

### OVERALL DIMENSIONS

Length	12100 mm
Width	2550 mm
Height	2780 mm

### SAFETY SYSTEM

Rear view camera with LCD display
Wheel guard
Rope compensation for auto levelling
Safety brakes on hoist
Hose protection failure device
Front mounted cabin

### STANDARD ACCESSORIES

All weather cabin
Steering wheel
Front Bumper
Reflector
Rear view mirror
Rear camera with LCD display
Wheel guard in the front & rear

### OPTIONAL ACCESSORIES

Fly jib
Air conditional cabin
Safe load indicator with hydraulic cut off
Front outriggers
Fire extinguisher
Beacon light
Helper seat
Spark arrestor

## FEATURES

Contact : 9300723311

TRX 1550 PLUS



### Visibility

Operator's visibility is optimum from the cabin for better controls.



### Front Mounted Cabin

Front cabin for better visibility & control of loads. Line of sight is always aligned with load even in articulation.



### Rear View Camera

Rear view camera with LCD display in cabin, ensures complete rear view increasing safety.



### Slotted Boom

Slotted Boom with Rope compensation for auto levelling of load and precision handling.



### Steering Wheel

Articulated power steering controlled through steering wheel for safe usage and precision.



### Tyre Guard

Tyre guard option for enhanced safety for operation crew.



### Outriggers

Front outrigger (optional) prosted for additional safety while on erection jobs.

### NOTES

- Max Lifting Capacity 15 T
- Max Boom Height 18.3 m with 4 Part Boom
- Max Horizontal Reach 12.4 m
- 15 T can be lifted to a height of 5.4 m
- 13 T can be lifted to a height of 5.4 m
- 10 T can be lifted to a height of 9.3 m through winch/ 8 m through slotted boom

- 6.3 T can be lifted to a height of 12.5 m through winch/9.3 m through slotted boom
- 4.3 T can be lifted to a height of 15 m through winch
- Tyres to be inflated with recommended air pressure
- Lifting Capacity is as per IS: 4573 - 1982 on a firm and level ground
- Weights of chains, slings & tackles to be considered extra